


Product Specification

- **Product Description:**
- **Product:**Jaw plate of jaw crusher,high manganese jaw plate
- **Material:**High manganese steel Mn_{13} , $Mn_{13}Cr_2$, Mn_{18} , $Mn_{18}Cr_2$ (The content of elements can be adjusted)
- **Brands:** Metso ,Sandvik,Kleeman, Terex
- **Certification:**CE
- **Chemical composition of Jaw plate:**

○ Chemical composition of Jaw plate:

	C	Si	Mn	P	S	Cr
Mn ₁₃	0.9-1.05	0.3-0.9	11.0-14.0	≤0.060	≤0.040	-
Mn ₁₃ Cr ₂	1.05-1.35	0.3-0.9	11.0-14.0	≤0.060	≤0.040	1.50-2.50
Mn ₁₈	1.05-1.35	0.3-0.9	16.0-19.0	≤0.060	≤0.040	-
Mn ₁₈ Cr ₂	1.05-1.35	0.3-0.9	16.0-19.0	≤0.060	≤0.040	1.50-2.50



Zhejiang Shengda Machinery Co., Ltd.

Brief Introduction

Content

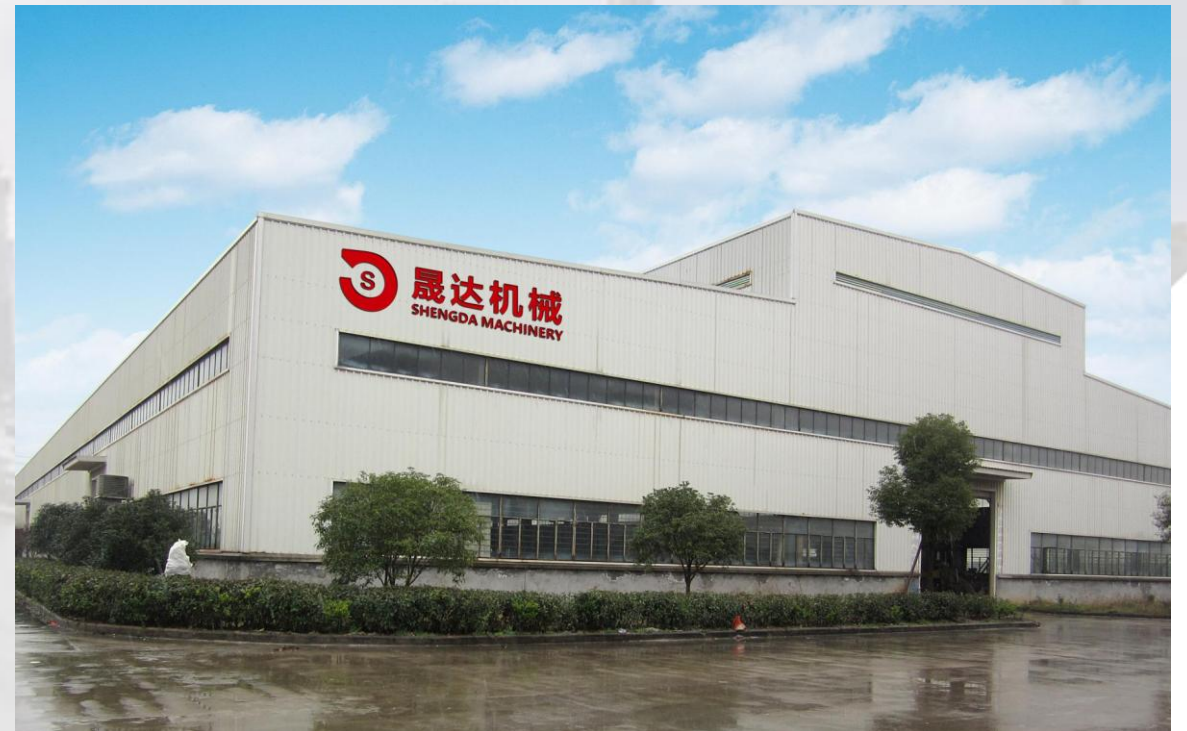
- Our Company
- Our Workshop
- Our Equipment
- Our Products
- Our Process
- Overview of our foundry
- Our Market
- Our Solutions and Service

About Our Company

- **Zhejiang Shengda Machinery Co., Ltd.** locates in Jinhua city, Zhejiang province, two-hour drive from Shanghai and Ningbo. The foundry founded in 1994 and have more than 20-year experience in casting industry. We grow up to be an export-oriented foundry with 150 employees from a small workshop. Now our foundry covers an area of 90000m².
- Our main business is about High Manganese Steel, High Chrome White Iron, Low Alloy Steel and Cast steel. We strictly follow the Standard of Chinese GB/T5680-2010, ASTM A128, DIN, JIS etc.
- We have a 8000-ton annual production capacity and single production capacity vary from 2kg to 5 ton.
- All our engineers and workers have 10 years work experience and ever worked for Mayang.

About Our Workshop

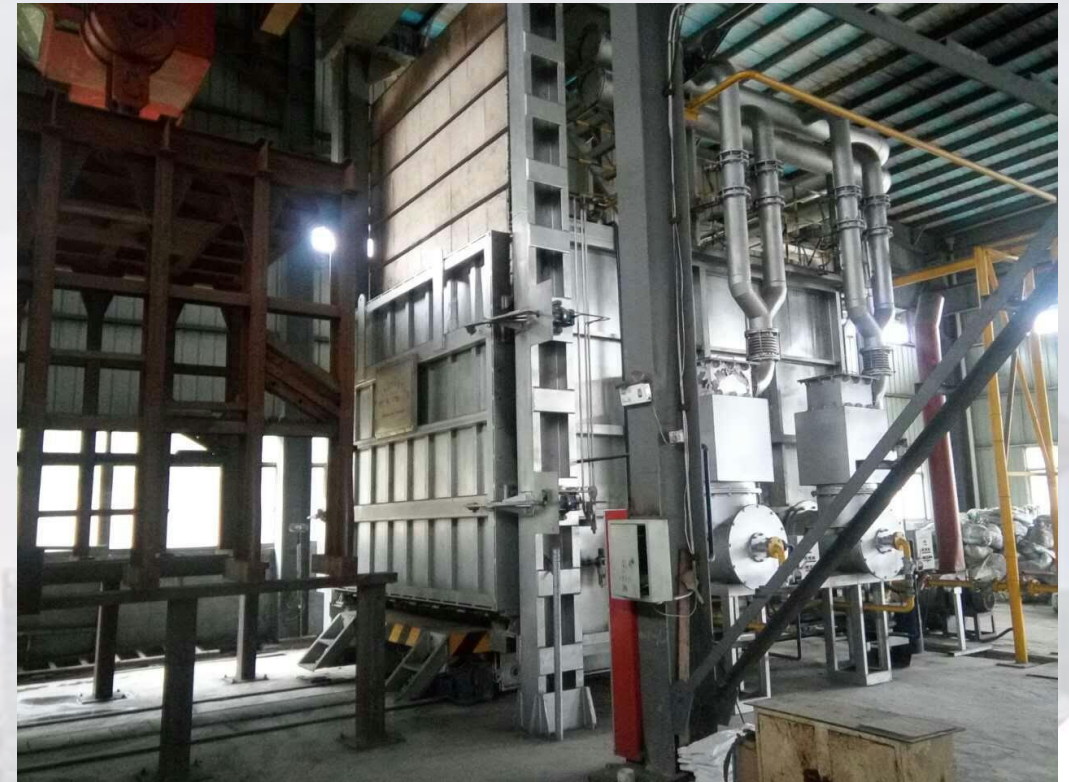
- Workshop 3- Warehouse for Pattern and Finished products
- Workshop 2- Moulding, Testing, Pouring, Heat treatment, Polishing
- Workshop 1- Machining



Our Equipment-Melting Machine & Heat treatment



Two sets of 3 tons Furnace
One set of 1.5 tons Furnace
One set of 0.75 tons Furnace



Two 7*3*2 meters Chamber Electric Heat Treatment Furnace
One set of Electric Well-Type Heat Treatment Furnace
Two Natural Gas Heat Treatment Furnace

Our Equipment-Machining Machine



One set of 5m CNC Vertical lathe
Two sets of 2.5m CNC Vertical lathe
One set of 2.5*1.8*1.2m Milling planer
One set of Face Miller



Our Equipment-Finishing Machine



Suspension Type Shot Blasting Machine

Two sets of Flating machine



Our equipment-Testing equipment



German-made direct-readout BRUKER Spectrometer



Metalloscope

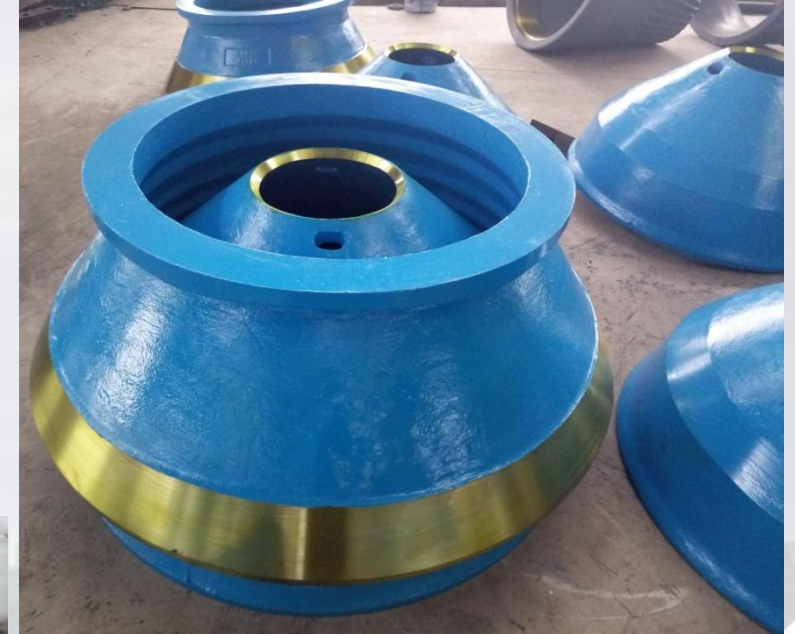


King Brinell Hardness Tester

Our Products

- **Metal Shredder Spare Parts:** Hammer, Grate, Reject door, Anvil, Side Liner, Spide cap etc
- **Cone Crusher Spare parts:** Concave & Mantle, Torching Ring, Main Shaft etc
- **Jaw Crusher Spare parts:** Jaw plate, Side plate etc
- **Ball Mill & Raymond Mill Spare parts:** Ring & Roller, Roller liner, Mill liner etc
- **Impact crusher spare parts:** Blow bar, Impact liner, Liner Plate etc
- **Other wearing spare parts:** Track shoe, Alloy hammer, Carrier liner etc
- **Brands support:** Metso, Sandvik, small parts of Tetex, Telsmith, Jianshe, SBM, Zenith etc

Photos about our products



Our Process



Moulding



Testing



Tapping



Pouring



Preservation



Machining



Dimension inspection



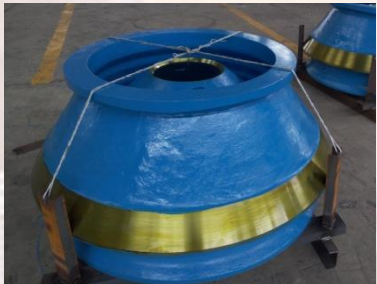
Polishing



Heat treatment

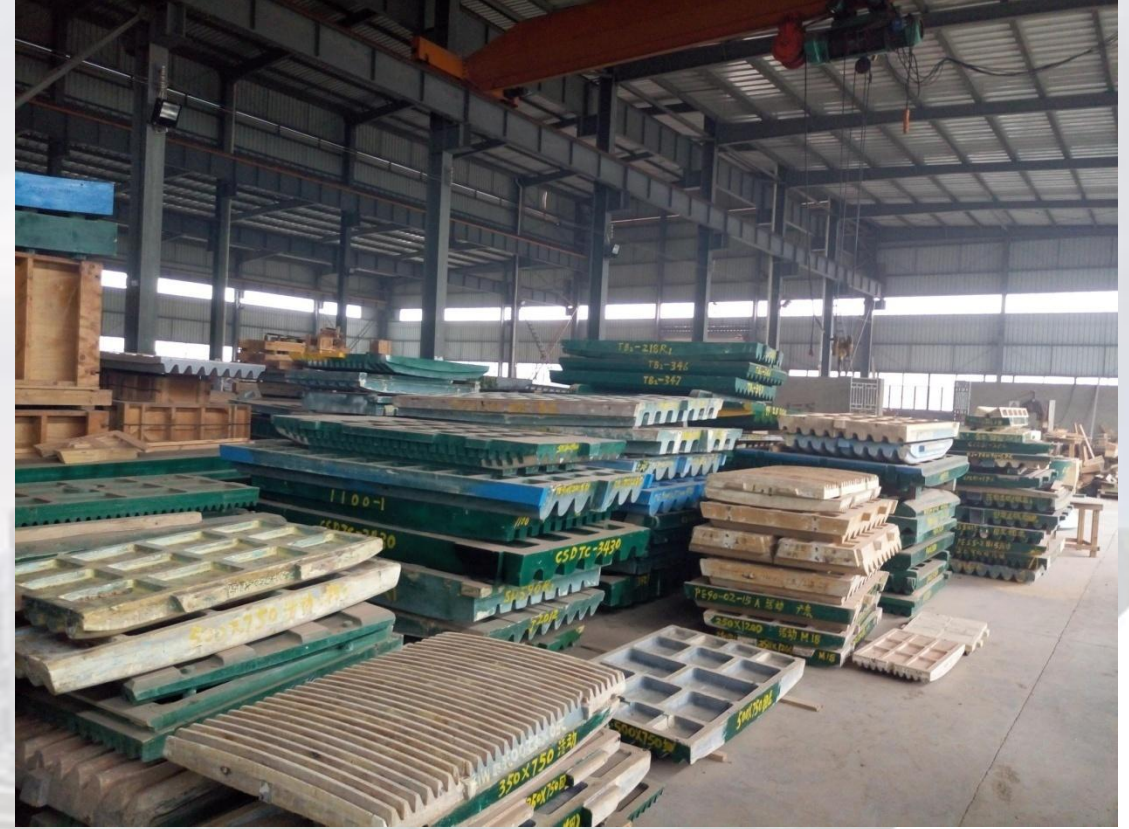


Sand cleaning



Painting & Package

Overview of our foundry-Pattern



Overview of our foundry-Finished products



Overview of our foundry-Moulding



Overview of our foundry-Heat Treatment



Now we have cooperated with Metso (Quzhou), we design our heat treatment as per Metso standard. As we know Heat treatment is the most key process regarding to quality control.

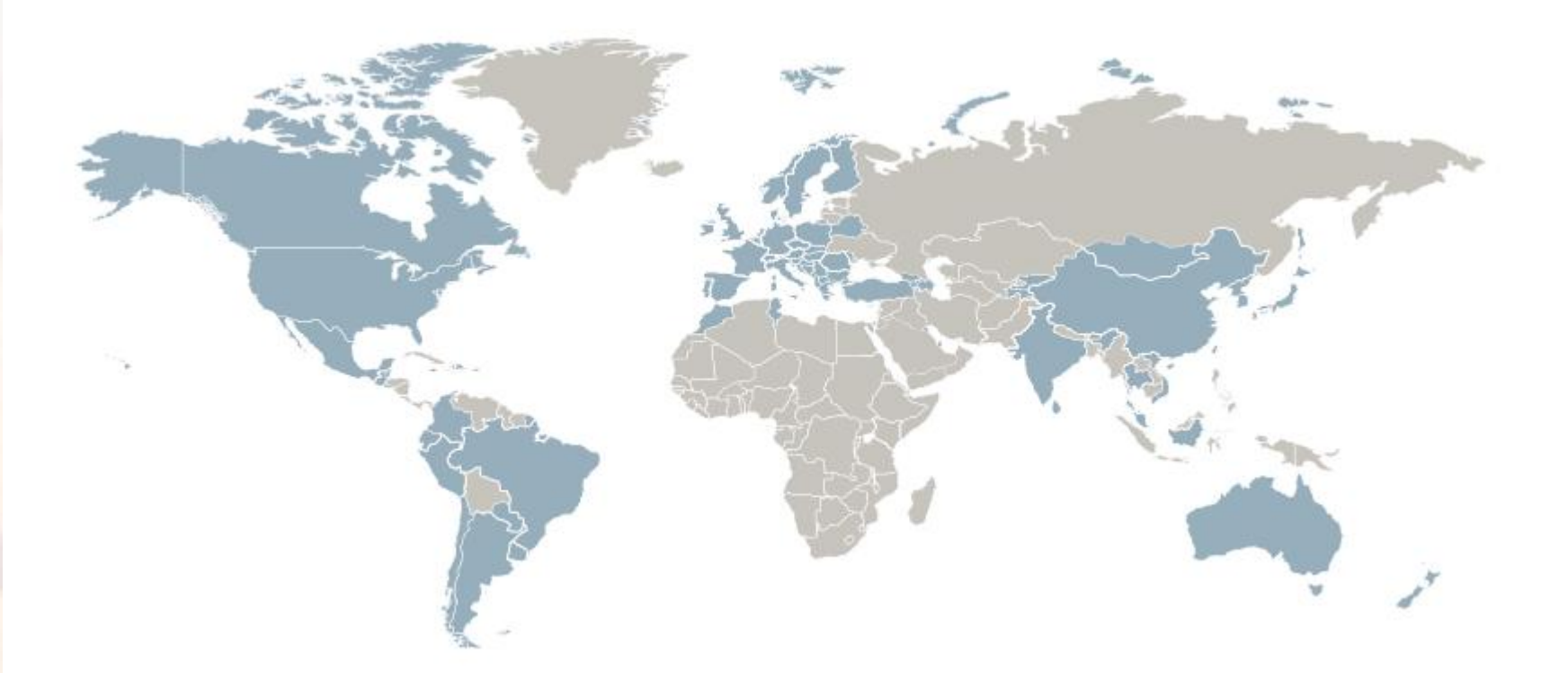
Overview of our foundry-Semi-finished products for Metso(Quzhou)



Overview of our foundry-Delivery



Our Market

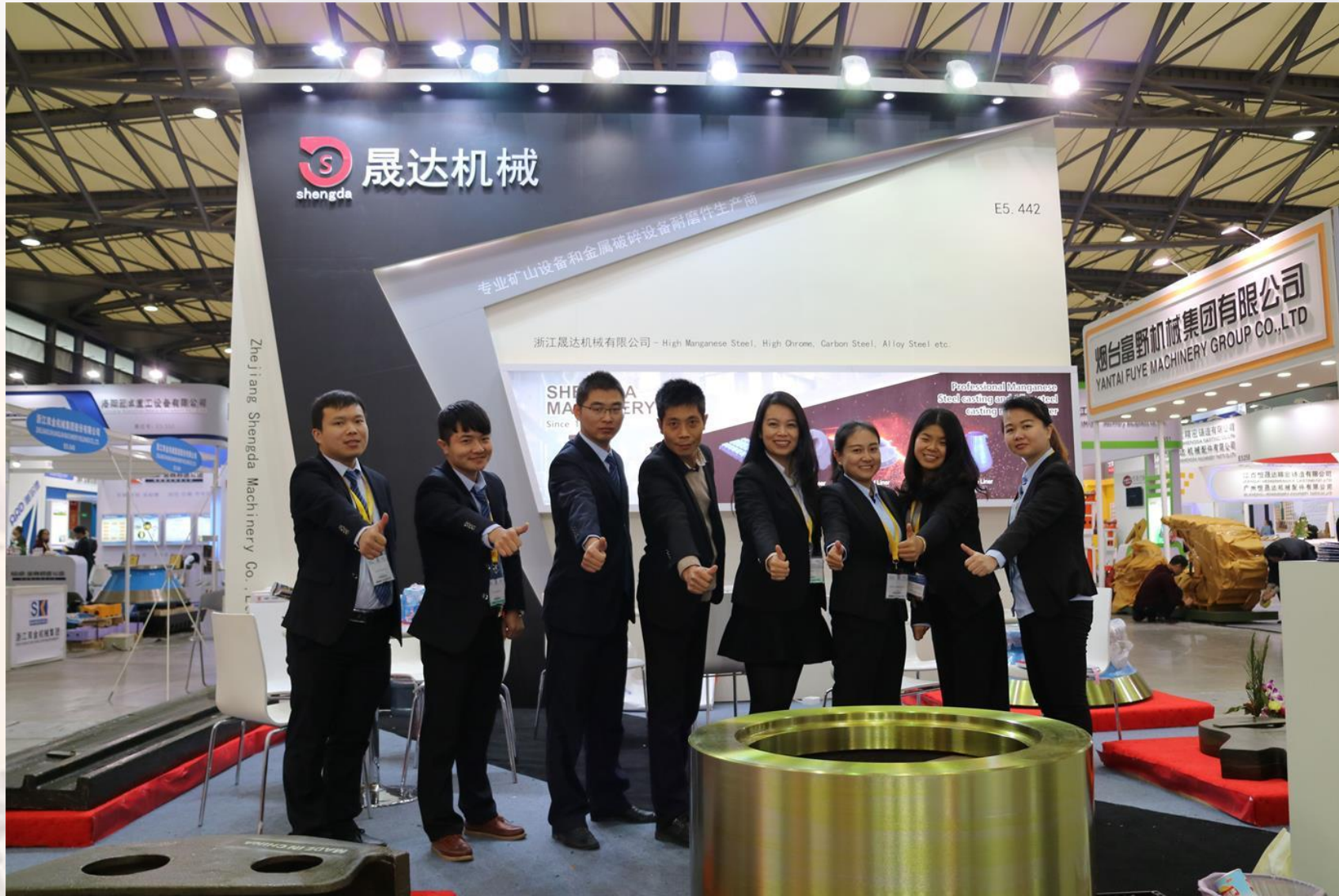


Our main market is in USA, Canada, Japan, Russia, German, UK, Sweden, France etc
Also win very good reputation from Africa, Middle east and South East Asia.

Our Solutions & Service

- Before ordering, we try to know our customer's need as soon as possible, so that we can reflect their needs to our products.
- During the manufacturing, we pay great attention to each detail from pattern making to shipping. We keep all production recording and sample pieces for tracing 3 years.
- After sale, we give continual attention to our customer about our products' performance and make sure we can offer help timely.
- We got a good feedback on our high quality products and efficient service from our customer. Even though there may some episode happened occasionally, we always shoulder the responsibility willingly and make our customer satisfied. We believe in Quality matter the life and customer is GOD!

Thank you



Contact us

- Zhejiang Shengda Machinery Co.,Ltd
- Address:ShaoJia Village, Jinhua City, Zhejiang province, China.
- Contact: Annie
- Email: info@shdcasting.com
- Tel: 0579-85861908
- Phone: 13867969615
- Fax: 0579-85866411

